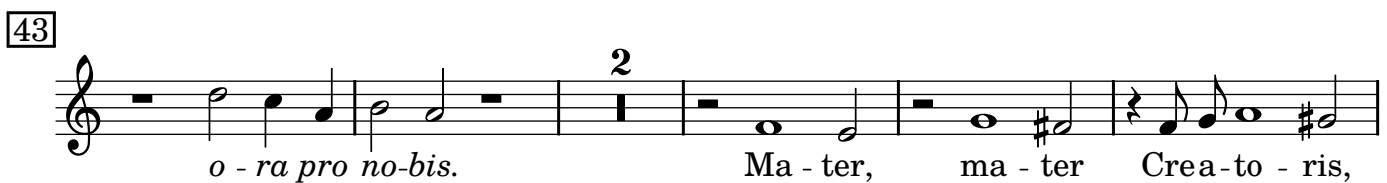
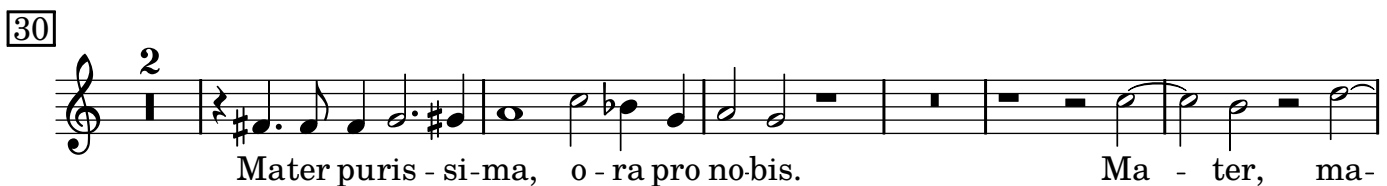


Litania Beatae Mariae Virginis

Symphoniae Sacrae liber secundus (1615)

Cantus I

Giovanni Gabrieli (1554/7 – 1612)



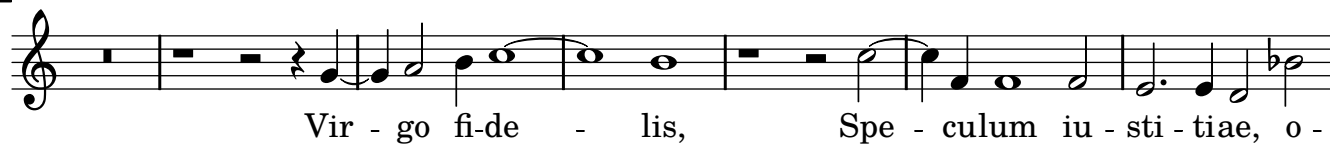
[50]



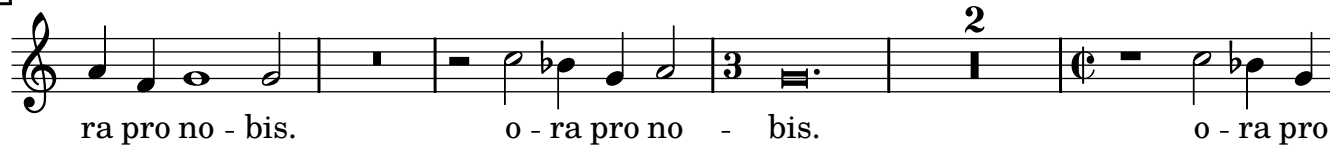
[57]



[63]



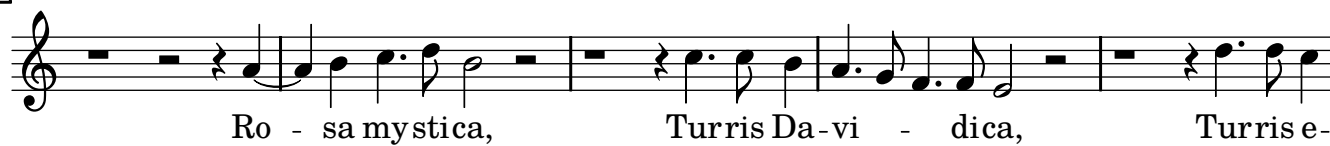
[70]



[77]



[85]



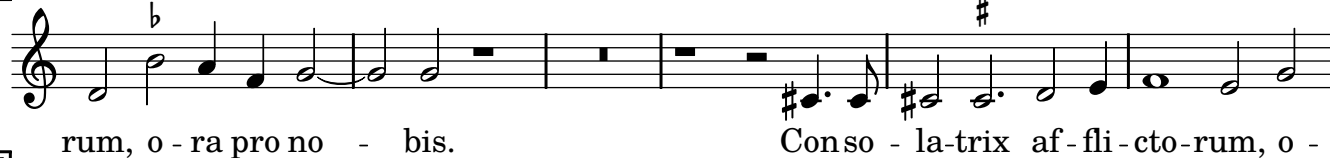
[90]



[95]



[101]



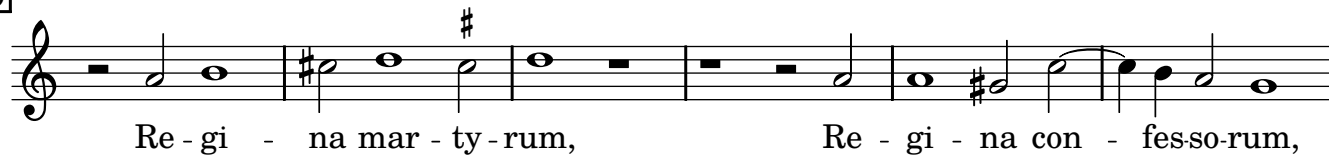
[107]



114



120



126



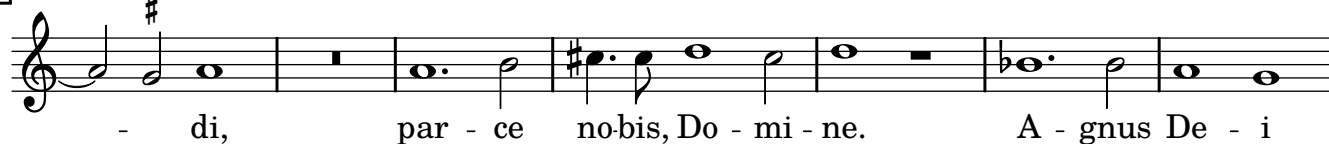
131



135



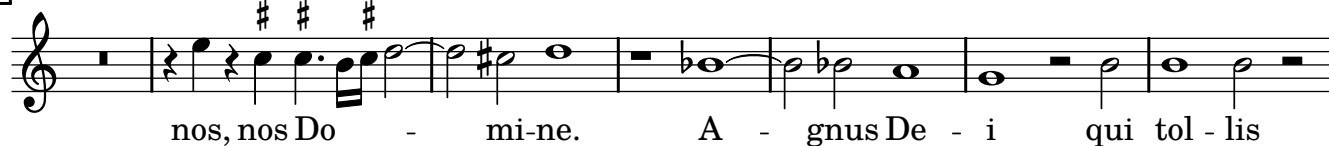
141



148



154



161



Litania Beatae Mariae Virginis

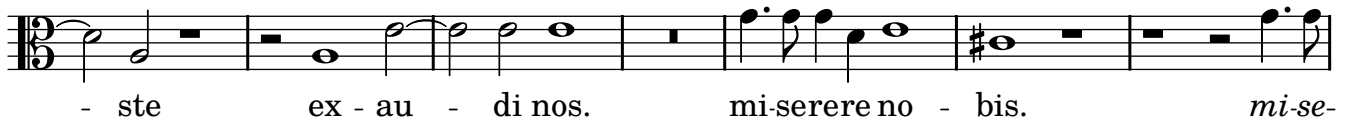
Symphoniae Sacrae liber secundus (1615)

Alto I

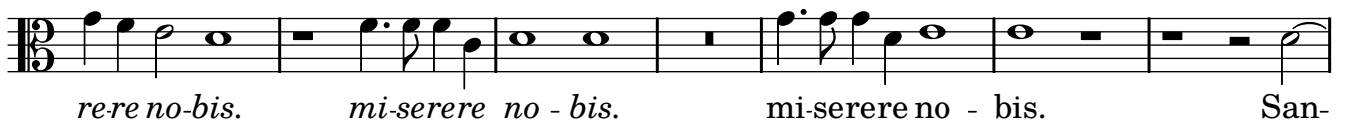
Giovanni Gabrieli (1554/7 – 1612)



7



14



21



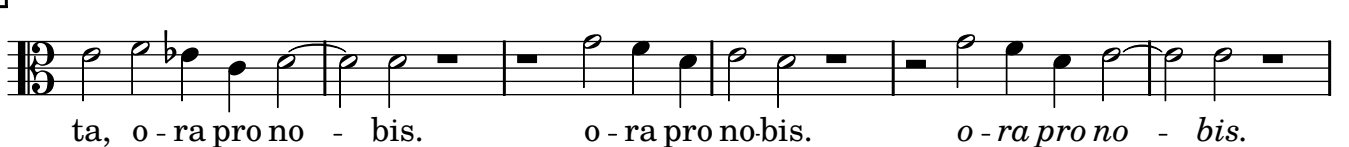
26



32



39



45



[52]



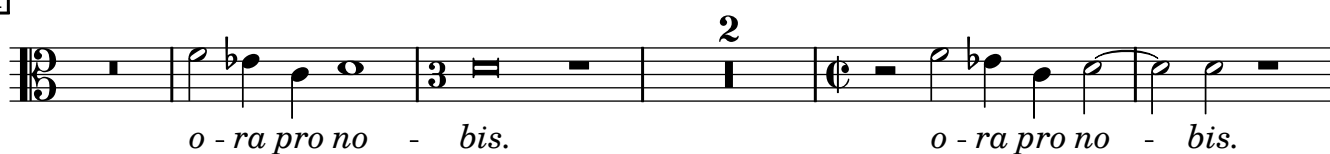
[58]



[65]



[71]



[78]



[86]



[91]



[97]



[103]



109



115



121



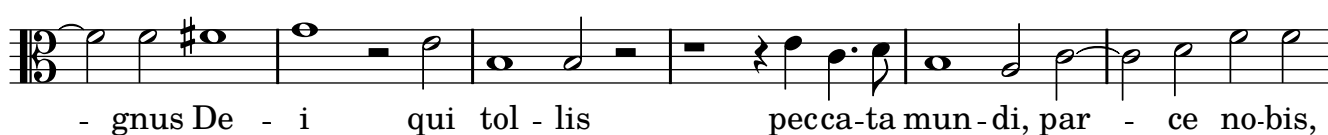
127



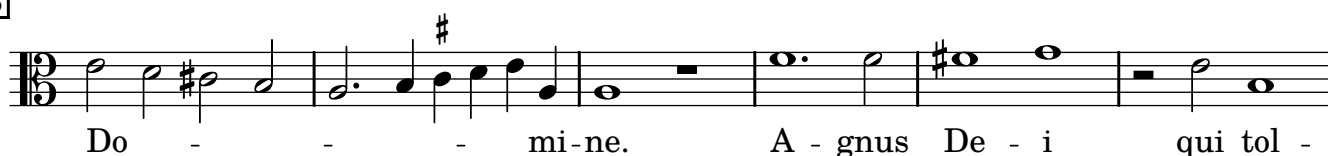
132



137



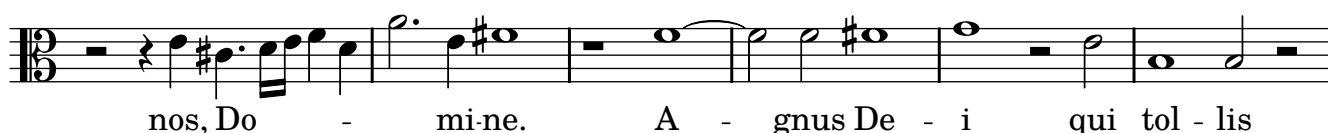
143



149



155



161



Litania Beatae Mariae Virginis

Symphoniae Sacrae liber secundus (1615)

Tenor I

Giovanni Gabrieli (1554/7 – 1612)



7



13



19



25



29



36



41



48



53

o - ra pro no - bis. Virgo praedican - da, o - ra pro no -

59



66

73

Musical score for the vocal line. The key signature is B-flat major (two flats). The time signature is 3/4. The melody starts with a whole note rest, followed by a half note G4, a quarter note A4, a quarter note Bb4, a quarter note C5, a quarter note Bb4, a quarter note A4, a quarter note G4, and a quarter note F4. The lyrics are: bis. o-ra pro no-bis. Vas ho-nora-bi-

81

le, o - ra pro no - bis. Ro - sa mystica, Turris Da-

88

vi - dica, Tur-ris e-bur-ne-a, Do-mus aure - a,

93



99



105

la-trix af-fli-cto-rum, o-ra pro no-bis. o-ra pro no-bis.

[111]



[118]



[124]



[130]



[134]



[140]



[147]



[154]



[160]



Litania Beatae Mariae Virginis

Symphoniae Sacrae liber secundus (1615)

Bassus I

Giovanni Gabrieli (1554/7 – 1612)



7



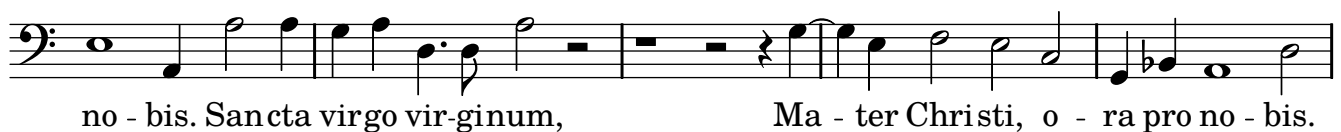
13



19



25



30



38



43



50



[56]



[62]



[69]



[76]



[82]



[89]



[94]



[100]



[106]



[112]



[119]



[125]



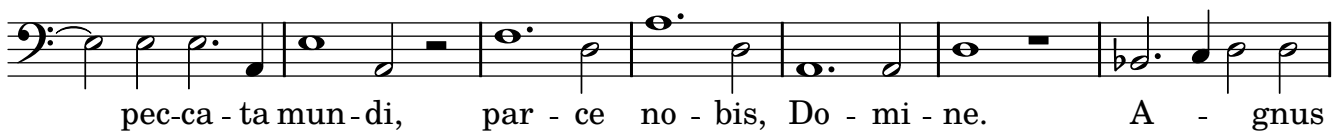
[130]



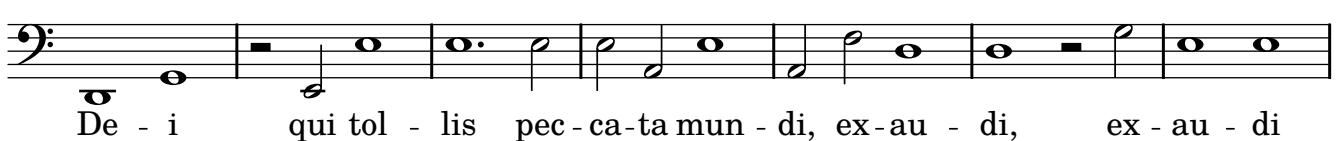
[134]



[140]



[147]



[154]



[161]



Litania Beatae Mariae Virginis

Symphoniae Sacrae liber secundus (1615)

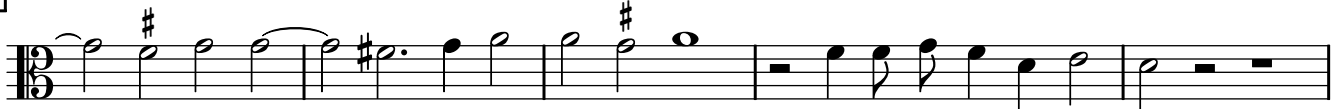
Cantus II

Giovanni Gabrieli (1554/7 – 1612)



Ky - ri - e e - leison. Christe e - leison. Chri - ste

7



au - di nos. Chri - ste ex - au - di nos. Pater de coelis, De - us,

12



Fi - li red - em - ptor mun - di, De - us, Spi - ritus San - cte, De - us,

16



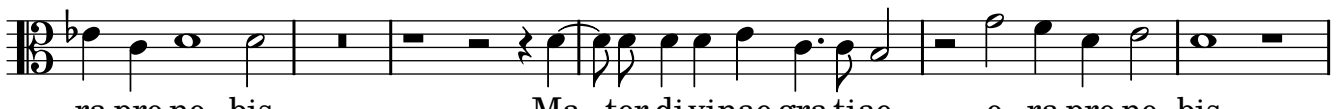
San - cta Tri - ni - tas, u - nus De - us, San - cta Ma - ri - a, san -

21



- cta Ma - ri - a, o - ra pro no bis. Sancta De - i ge - nitrix, o -

27



ra pro no - bis. Ma - ter di vi - nae gra - tia - e, o - ra pro no - bis.

33



Mater castis - si - ma, o - ra pro no bis. Mater in - te - me -

41



ra - ta, Mater a - ma - bilis, Ma - ter ad - mi - ra - bi - lis, o - ra pro no -

47



- bis. Mater Sal - va - to - ris, Ma - ter pru - den - tis - si -

[54]



[60]



[67]



[74]



[80]



[87]



[92]



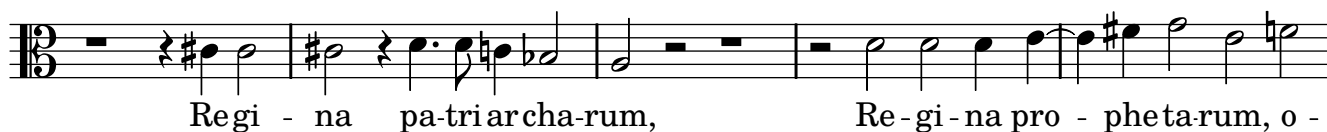
[98]



[105]



[112]



[117]



[124]



[131]



[135]



[140]



[145]



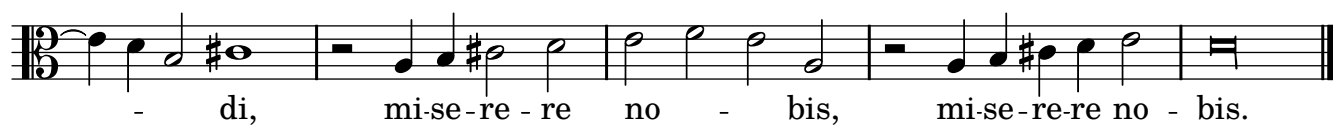
[151]



[157]



[162]



Litania Beatae Mariae Virginis

Symphoniae Sacrae liber secundus (1615)

Altus II

Giovanni Gabrieli (1554/7 – 1612)



7



12



16



21



27



32



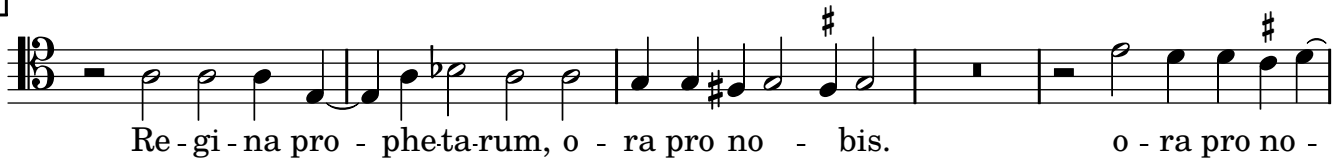
39



45



[115]



[120]



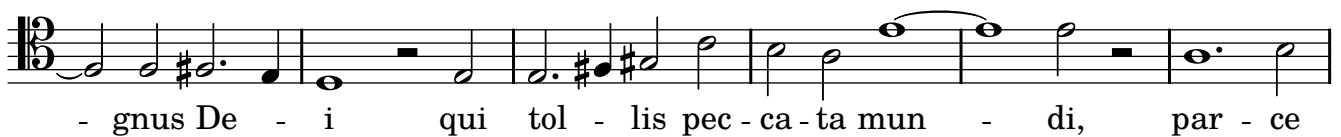
[127]



[132]



[137]



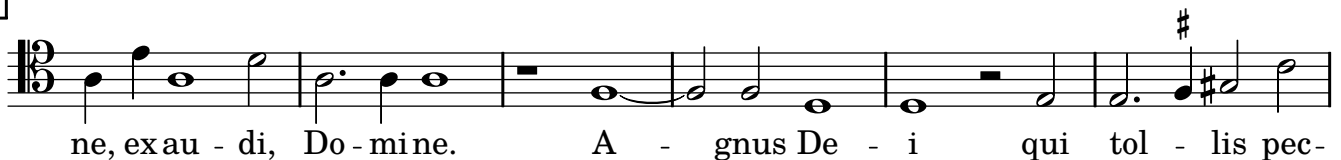
[143]



[149]



[155]



[161]



Litania Beatae Mariae Virginis

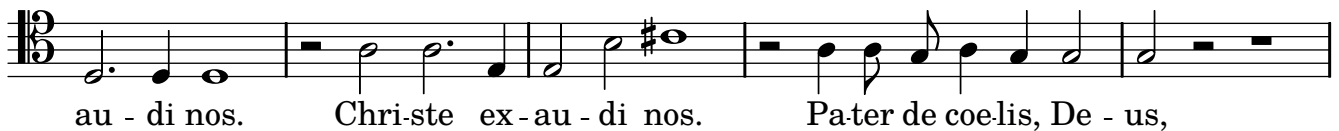
Symphoniae Sacrae liber secundus (1615)

Tenor II

Giovanni Gabrieli (1554/7 – 1612)



7



12



16



21



27



32



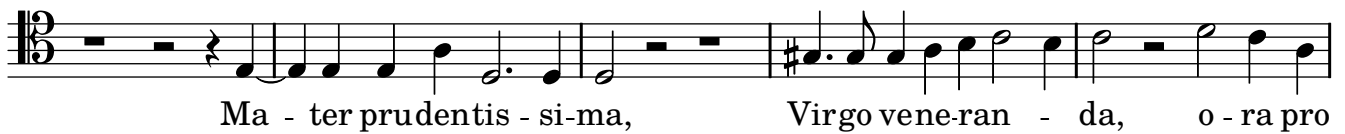
40



45



[52]



[57]



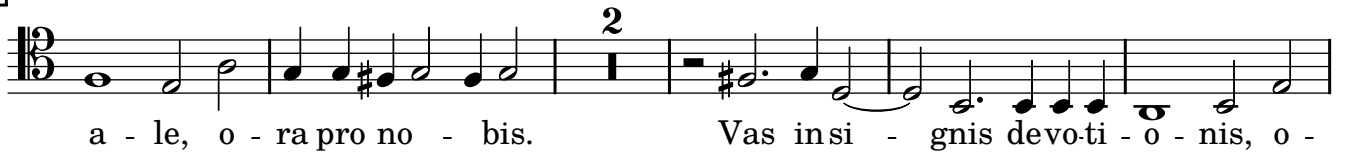
[64]



[72]



[78]



[85]



[90]



[96]



[103]



[110]



[115]



[120]



[127]



[132]



[137]



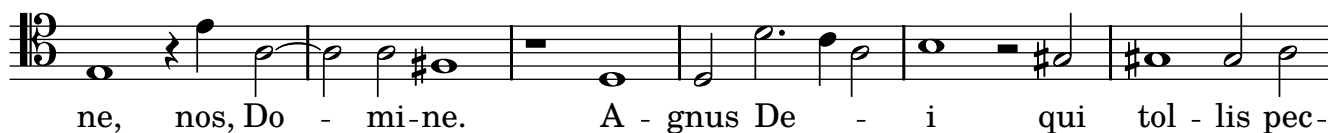
[143]



[149]



[155]



[161]



Litania Beatae Mariae Virginis

Symphoniae Sacrae liber secundus (1615)

Bassus II

Giovanni Gabrieli (1554/7 – 1612)



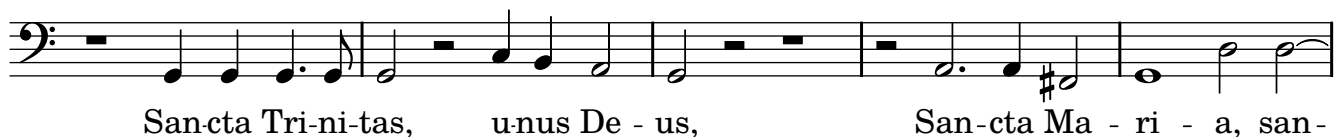
7



12



16



21



27



33



41



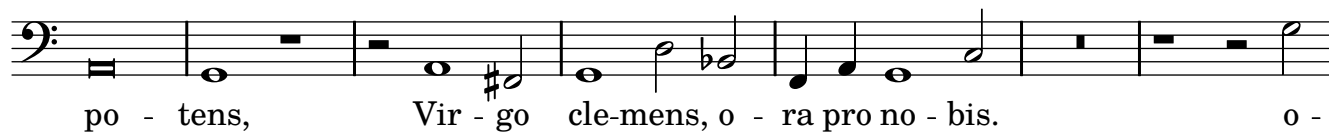
47



[54]



[60]



[67]



[74]



[79]



[86]



[92]



[98]



[105]



[112]



[117]



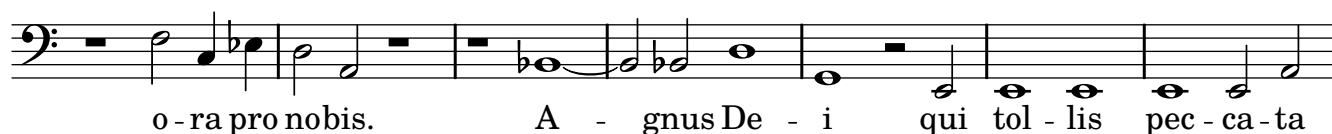
[123]



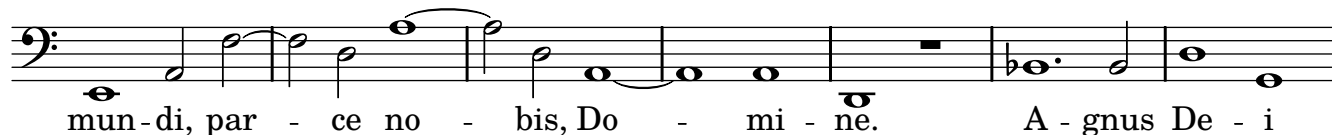
[130]



[134]



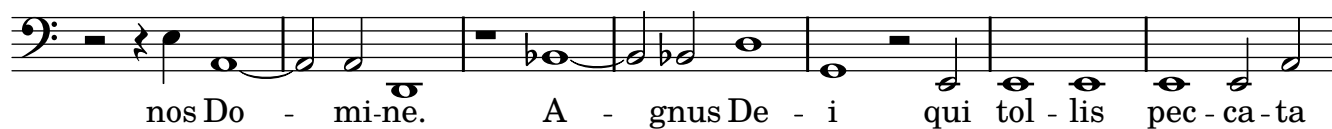
[141]



[148]



[155]



[162]



Litania Beatae Mariae Virginis

Symphoniae Sacrae liber secundus (1615)

Bassus pro organo Giovanni Gabrieli (1554/7 – 1612)



[8]



[13]



[18]



[24]



[29]



[34]



[39]



[44]



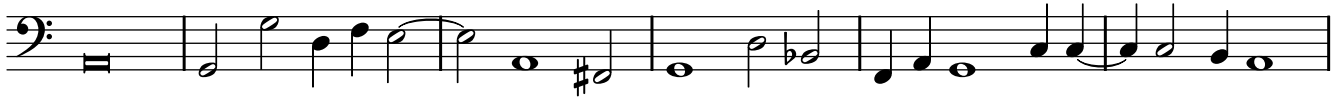
[50]



[55]



[60]



[66]



[72]



[78]



[84]



[89]



[94]



[99]



[104]



[illegible]

Musical notation for the bass line of 'The Rose Tree'. The key signature has one flat (B-flat). The melody consists of the following notes: G2, A2, Bb2, A2, G2, F2, E2, D2, C2, Bb1, A1, G1, F1, E1, D1, C1, Bb0, A0, G0, F0, E0, D0, C0, Bb-1, A-1, G-1, F-1, E-1, D-1, C-1, Bb-2, A-2, G-2, F-2, E-2, D-2, C-2, Bb-3, A-3, G-3, F-3, E-3, D-3, C-3, Bb-4, A-4, G-4, F-4, E-4, D-4, C-4, Bb-5, A-5, G-5, F-5, E-5, D-5, C-5, Bb-6, A-6, G-6, F-6, E-6, D-6, C-6, Bb-7, A-7, G-7, F-7, E-7, D-7, C-7, Bb-8, A-8, G-8, F-8, E-8, D-8, C-8, Bb-9, A-9, G-9, F-9, E-9, D-9, C-9, Bb-10, A-10, G-10, F-10, E-10, D-10, C-10, Bb-11, A-11, G-11, F-11, E-11, D-11, C-11, Bb-12, A-12, G-12, F-12, E-12, D-12, C-12, Bb-13, A-13, G-13, F-13, E-13, D-13, C-13, Bb-14, A-14, G-14, F-14, E-14, D-14, C-14, Bb-15, A-15, G-15, F-15, E-15, D-15, C-15, Bb-16, A-16, G-16, F-16, E-16, D-16, C-16, Bb-17, A-17, G-17, F-17, E-17, D-17, C-17, Bb-18, A-18, G-18, F-18, E-18, D-18, C-18, Bb-19, A-19, G-19, F-19, E-19, D-19, C-19, Bb-20, A-20, G-20, F-20, E-20, D-20, C-20, Bb-21, A-21, G-21, F-21, E-21, D-21, C-21, Bb-22, A-22, G-22, F-22, E-22, D-22, C-22, Bb-23, A-23, G-23, F-23, E-23, D-23, C-23, Bb-24, A-24, G-24, F-24, E-24, D-24, C-24, Bb-25, A-25, G-25, F-25, E-25, D-25, C-25, Bb-26, A-26, G-26, F-26, E-26, D-26, C-26, Bb-27, A-27, G-27, F-27, E-27, D-27, C-27, Bb-28, A-28, G-28, F-28, E-28, D-28, C-28, Bb-29, A-29, G-29, F-29, E-29, D-29, C-29, Bb-30, A-30, G-30, F-30, E-30, D-30, C-30, Bb-31, A-31, G-31, F-31, E-31, D-31, C-31, Bb-32, A-32, G-32, F-32, E-32, D-32, C-32, Bb-33, A-33, G-33, F-33, E-33, D-33, C-33, Bb-34, A-34, G-34, F-34, E-34, D-34, C-34, Bb-35, A-35, G-35, F-35, E-35, D-35, C-35, Bb-36, A-36, G-36, F-36, E-36, D-36, C-36, Bb-37, A-37, G-37, F-37, E-37, D-37, C-37, Bb-38, A-38, G-38, F-38, E-38, D-38, C-38, Bb-39, A-39, G-39, F-39, E-39, D-39, C-39, Bb-40, A-40, G-40, F-40, E-40, D-40, C-40, Bb-41, A-41, G-41, F-41, E-41, D-41, C-41, Bb-42, A-42, G-42, F-42, E-42, D-42, C-42, Bb-43, A-43, G-43, F-43, E-43, D-43, C-43, Bb-44, A-44, G-44, F-44, E-44, D-44, C-44, Bb-45, A-45, G-45, F-45, E-45, D-45, C-45, Bb-46, A-46, G-46, F-46, E-46, D-46, C-46, Bb-47, A-47, G-47, F-47, E-47, D-47, C-47, Bb-48, A-48, G-48, F-48, E-48, D-48, C-48, Bb-49, A-49, G-49, F-49, E-49, D-49, C-49, Bb-50, A-50, G-50, F-50, E-50, D-50, C-50, Bb-51, A-51, G-51, F-51, E-51, D-51, C-51, Bb-52, A-52, G-52, F-52, E-52, D-52, C-52, Bb-53, A-53, G-53, F-53, E-53, D-53, C-53, Bb-54, A-54, G-54, F-54, E-54, D-54, C-54, Bb-55, A-55, G-55, F-55, E-55, D-55, C-55, Bb-56, A-56, G-56, F-56, E-56, D-56, C-56, Bb-57, A-57, G-57, F-57, E-57, D-57, C-57, Bb-58, A-58, G-58, F-58, E-58, D-58, C-58, Bb-59, A-59, G-59, F-59, E-59, D-59, C-59, Bb-60, A-60, G-60, F-60, E-60, D-60, C-60, Bb-61, A-61, G-61, F-61, E-61, D-61, C-61, Bb-62, A-62, G-62, F-62, E-62, D-62, C-62, Bb-63, A-63, G-63, F-63, E-63, D-63, C-63, Bb-64, A-64, G-64, F-64, E-64, D-64, C-64, Bb-65, A-65, G-65, F-65, E-65, D-65, C-65, Bb-66, A-66, G-66, F-66, E-66, D-66, C-66, Bb-67, A-67, G-67, F-67, E-67, D-67, C-67, Bb-68, A-68, G-68, F-68, E-68, D-68, C-68, Bb-69, A-69, G-69, F-69, E-69, D-69, C-69, Bb-70, A-70, G-70, F-70, E-70, D-70, C-70, Bb-71, A-71, G-71, F-71, E-71, D-71, C-71, Bb-72, A-72, G-72, F-72, E-72, D-72, C-72, Bb-73, A-73, G-73, F-73, E-73, D-73, C-73, Bb-74, A-74, G-74, F-74, E-74, D-74, C-74, Bb-75, A-75, G-75, F-75, E-75, D-75, C-75, Bb-76, A-76, G-76, F-76, E-76, D-76, C-76, Bb-77, A-77, G-77, F-77, E-77, D-77, C-77, Bb-78, A-78, G-78, F-78, E-78, D-78, C-78, Bb-79, A-79, G-79, F-79, E-79, D-79, C-79, Bb-80, A-80, G-80, F-80, E-80, D-80, C-80, Bb-81, A-81, G-81, F-81, E-81, D-81, C-81, Bb-82, A-82, G-82, F-82, E-82, D-82, C-82, Bb-83, A-83, G-83, F-83, E-83, D-83, C-83, Bb-84, A-84, G-84, F-84, E-84, D-84, C-84, Bb-85, A-85, G-85, F-85, E-85, D-85, C-85, Bb-86, A-86, G-86, F-86, E-86, D-86, C-86, Bb-87, A-87, G-87, F-87, E-87, D-87, C-87, Bb-88, A-88, G-88, F-88, E-88, D-88, C-88, Bb-89, A-89, G-89, F-89, E-89, D-89, C-89, Bb-90, A-90, G-90, F-90, E-90, D-90, C-90, Bb-91, A-91, G-91, F-91, E-91, D-91, C-91, Bb-92, A-92, G-92, F-92, E-92, D-92, C-92, Bb-93, A-93, G-93, F-93, E-93, D-93, C-93, Bb-94, A-94, G-94, F-94, E-94, D-94, C-94, Bb-95, A-95, G-95, F-95, E-95, D-95, C-95, Bb-96, A-96, G-96, F-96, E-96, D-96, C-96, Bb-97, A-97, G-97, F-97, E-97, D-97, C-97, Bb-98, A-98, G-98, F-98, E-98, D-98, C-98, Bb-99, A-99, G-99, F-99, E-99, D-99, C-99, Bb-100, A-100, G-100, F-100, E-100, D-100, C-100, Bb-101, A-101, G-101, F-101, E-101, D-101, C-101, Bb-102, A-102, G-102, F-102, E-102, D-102, C-102, Bb-103, A-103, G-103, F-103, E-103, D-103, C-103, Bb-104, A-104, G-104, F-104, E-104, D-104, C-104, Bb-105, A-105, G-105, F-105, E-105, D-105, C-105, Bb-106, A-106, G-106, F-106, E-106, D-106, C-106, Bb-107, A-107, G-107, F-107, E-107, D-107, C-107, Bb-108, A-108, G-108, F-108, E-108, D-108, C-108, Bb-109, A-109, G-109, F-109, E-109, D-109, C-109, Bb-110, A-110, G-110, F-110, E-110, D-110, C-11

The bass line of 'The Rose Tree' is written on a single staff. It begins with a C4 (one ledger line below), followed by a D4 (below staff), E4 (below staff), and F4 (below staff). The melody then moves up to G4 (below staff), A4 (below staff), and B4 (below staff). It continues with a series of eighth and sixteenth notes, including a triplet of eighth notes (C5, D5, E5) and a sixteenth note (F5). The line concludes with a half note (G5) and a quarter note (F5).

[illegible][illegible]

The bass line of 'The Rose Tree' is written on a single staff with a bass clef. It consists of 12 measures. The notes are: G2 (quarter), A2 (quarter), Bb2 (quarter), A2 (quarter), G2 (quarter), F2 (quarter), E2 (quarter), D2 (quarter), C2 (quarter), Bb1 (quarter), A1 (quarter), G1 (quarter). There are rests in measures 2, 4, 6, 8, 10, and 12.

[illegible]

Musical notation for the bass line of 'The Rose Tree'. The notation is on a single staff with a bass clef. It consists of six measures. The notes are: Measure 1: two eighth notes (G2, F2); Measure 2: two eighth notes (E2, D2); Measure 3: two eighth notes (C2, B1); Measure 4: two eighth notes (A1, G1); Measure 5: two eighth notes (F1, E1); Measure 6: two eighth notes (D1, C1). The notes are written on the lines and spaces of the staff, with the first measure starting on the second line (G2) and the last measure ending on the first line (C1).

[illegible]

The bass line of 'The Rose Tree' is written in G major and 3/4 time. It begins with a low G (two ledger lines below the staff), followed by a half note F# (first line) and a half note E (first space). The melody then moves to a half note D (first space), a half note C# (first line), and a half note B (first space). This is followed by a half note A (first space), a half note G (first line), and a half note F# (first line). The line continues with a half note E (first space), a half note D (first space), and a half note C# (first line). The final measure consists of a half note B (first space) and a half note A (first space), ending with a double bar line.